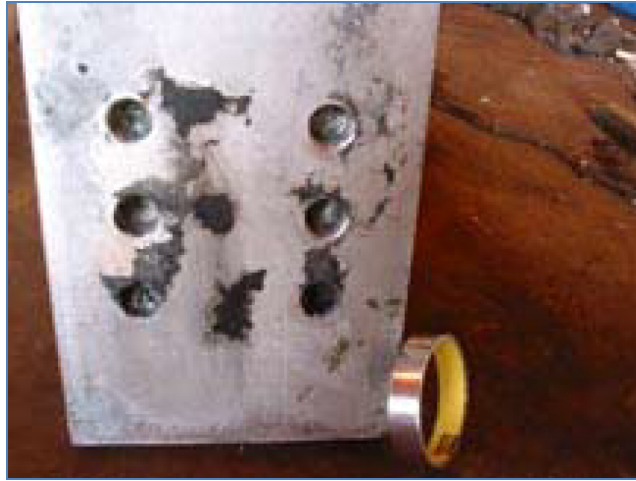
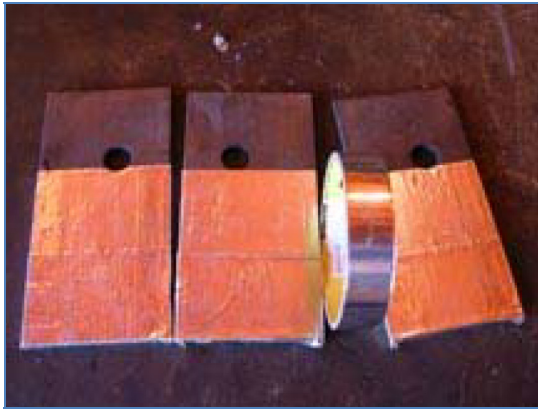


Appendix 2.

Pictures of Masking Materials During Phase 1 Testing

3M High Temperature Aluminum Tape



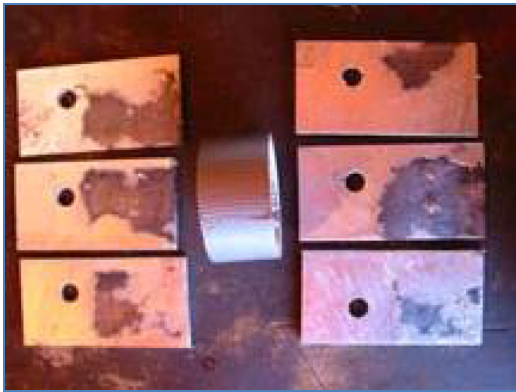
DAP Household Adhesive Sealant



Dow Corning Compound #111



Duct Tape



Galva Stop



GE 100% Silicone Caulk



Kapton Tape



Macropoxy 846



Maskote Zinc Stop-Off



NAPA RTV Red



Stop Galv



Valmont Masking Compound



VHT Header Paint



ZYP Boron Nitride Hardcoat



ZYP Boron Nitride Lubricoat



Additional Pictures

